



Beginning Date: January 2008
End Date: December 2017

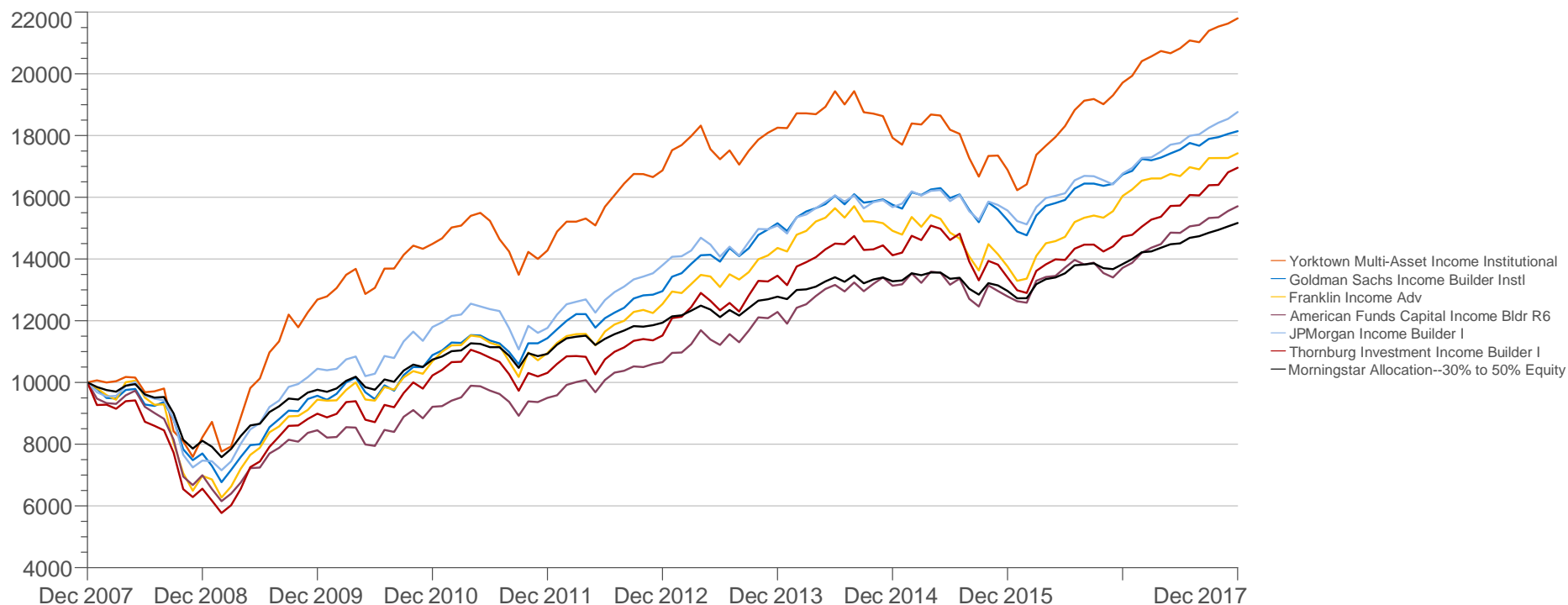
Managers in Zephyr:

Yorktown Multi-Asset Income Institutional
Goldman Sachs Income Builder Instl
Franklin Income Adv
American Funds Capital Income Bldr R6
JPMorgan Income Builder I
Thornburg Investment Income Builder I

Benchmark:
Morningstar Allocation--30% to 50% Equity

Manager Performance

January 2008 - December 2017 (Single Computation)



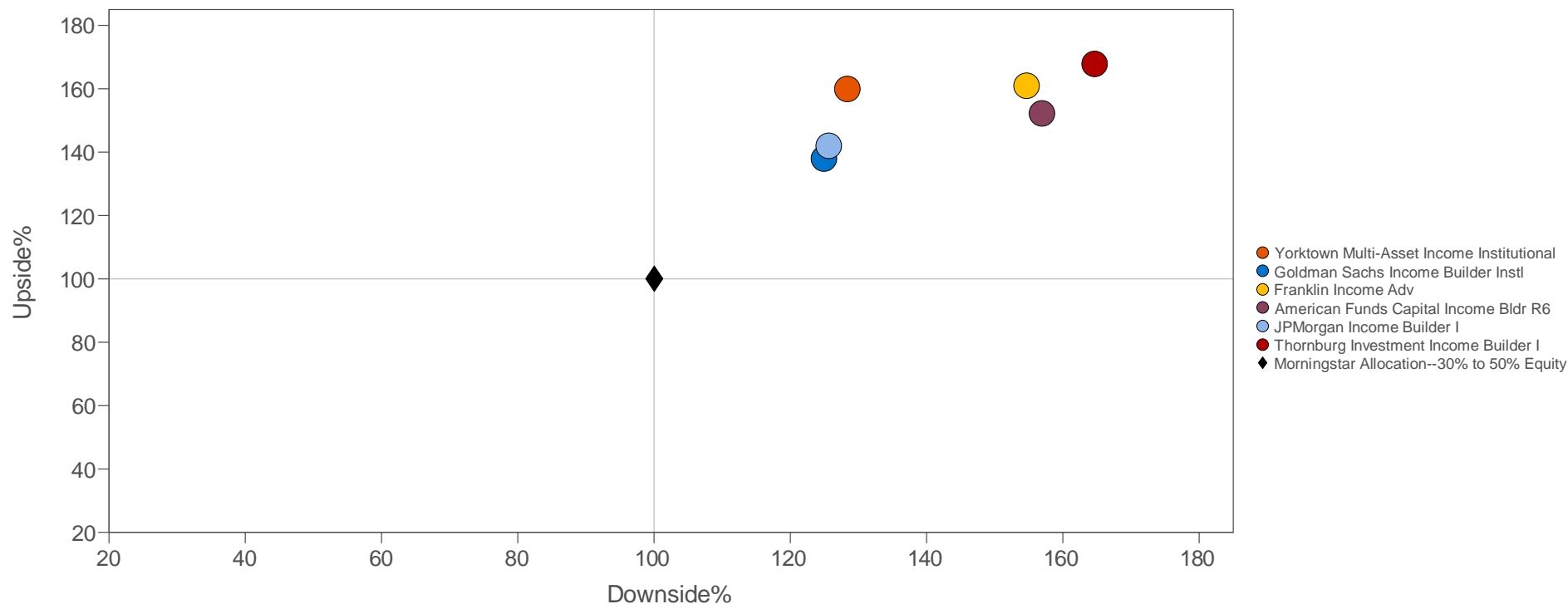
Performance Table

January 2008 - December 2017. Single Computation

	Portfolio Performance			vs. Morningstar Allocation--30% to 50% Equity					
	Annualized Return (%)	Cumulative Return (%)	Std Dev (%)	Annualized Excess Return (%)	Cumulative Excess Return (%)	Info Ratio	Significance Level (%)	Explained Variance (%)	Tracking Error (%)
Yorktown Multi-Asset Income Institutional	8.10	117.97	12.06	3.85	66.29	0.52	93.43	67.69	7.41
Goldman Sachs Income Builder Instl	6.14	81.41	9.55	1.88	29.74	0.58	95.06	93.06	3.27
Franklin Income Adv	5.71	74.24	11.96	1.46	22.57	0.26	78.14	89.78	5.69
American Funds Capital Income Bldr R6	4.62	57.10	11.17	0.37	5.43	0.07	59.09	90.44	4.92
JPMorgan Income Builder I	6.49	87.62	9.83	2.24	35.95	0.65	96.72	93.82	3.43
Thornburg Investment Income Builder I	5.42	69.56	12.38	1.17	17.89	0.19	72.37	90.63	6.01

Upside / Downside

January 2008 - December 2017 (Single Computation)



Upside / Downside Table

January 2008 - December 2017 (Single Computation)

	# of Months		Average Return (%)		Average Return (%) vs. Market		Month (%)		1-Year (%)		Market Benchmark (%)		
	Up	Down	Up	Down	Up Market	Down Market	Best	Worst	Best	Worst	Up Capture	Down Capture	R-Squared
Yorktown Multi-Asset Income Institutional	79	41	2.45	-2.63	2.24	-2.23	11.87	-14.11	70.14	-22.38	160.0	128.3	67.69
Goldman Sachs Income Builder Instl	76	44	2.08	-2.14	1.95	-2.20	6.85	-10.96	42.33	-28.76	138.0	125.0	93.06
Franklin Income Adv	75	45	2.45	-2.69	2.25	-2.80	8.69	-13.49	50.20	-34.59	160.9	154.7	89.78
American Funds Capital Income Bldr R6	73	47	2.36	-2.57	2.13	-2.86	6.91	-14.69	33.79	-34.04	152.2	156.9	90.44
JPMorgan Income Builder I	80	40	2.03	-2.36	2.00	-2.20	7.65	-13.10	45.98	-25.31	142.0	125.6	93.82
Thornburg Investment Income Builder I	76	44	2.49	-2.93	2.33	-3.01	10.75	-15.29	55.70	-37.83	167.8	164.7	90.63
Morningstar Allocation--30% to 50% Equity	79	41	1.45	-1.72	1.45	-1.72	5.29	-9.47	29.35	-22.28	100.0	100.0	100.00

Manager vs Benchmark: Return

January 2008 - December 2017 (not annualized if less than 1 year)

	1 year	2 years	3 years	4 years	5 years	10 years	Since Inception
Yorktown Multi-Asset Income Institutional	10.58%	13.61%	6.73%	4.53%	5.26%	8.10%	5.93%
Goldman Sachs Income Builder Instl	8.38%	9.04%	4.81%	4.59%	6.96%	6.14%	7.28%
Franklin Income Adv	8.62%	12.54%	5.32%	4.96%	6.80%	5.71%	10.27%
American Funds Capital Income Bldr R6	14.56%	10.83%	6.15%	6.34%	8.07%	4.62%	9.43%
JPMorgan Income Builder I	11.89%	9.77%	6.16%	5.61%	6.34%	6.49%	5.94%
Thornburg Investment Income Builder I	15.17%	12.49%	6.29%	5.94%	8.04%	5.42%	10.15%
Morningstar Allocation--30% to 50% Equity	9.63%	8.17%	4.53%	4.38%	4.91%	4.25%	N/A

Calendar Year Return

As of December 2017

	2017	2016	2015	2014	2013	2012	2011	2010	2009	2008
Yorktown Multi-Asset Income Institutional	10.58%	16.74%	-5.81%	-1.79%	8.20%	18.16%	-1.45%	14.20%	54.27%	-17.76%
Goldman Sachs Income Builder Instl	8.38%	9.70%	-3.17%	3.95%	16.98%	13.33%	5.05%	13.75%	24.28%	-23.00%
Franklin Income Adv	8.62%	16.61%	-7.75%	3.86%	14.50%	14.48%	2.51%	13.15%	35.43%	-30.27%
American Funds Capital Income Bldr R6	14.56%	7.23%	-2.64%	6.93%	15.24%	12.18%	3.15%	8.99%	20.84%	-30.06%
JPMorgan Income Builder I	11.89%	7.69%	-0.70%	3.95%	9.32%	17.28%	-0.25%	12.93%	39.84%	-25.31%
Thornburg Investment Income Builder I	15.17%	9.86%	-5.10%	4.90%	16.85%	11.72%	0.82%	13.79%	37.04%	-34.42%
Morningstar Allocation--30% to 50% Equity	9.63%	6.72%	-2.37%	3.90%	7.07%	9.22%	1.74%	10.01%	20.38%	-18.90%

Risk / Return Table

Annualized Summary Statistics: January 2008 - December 2017

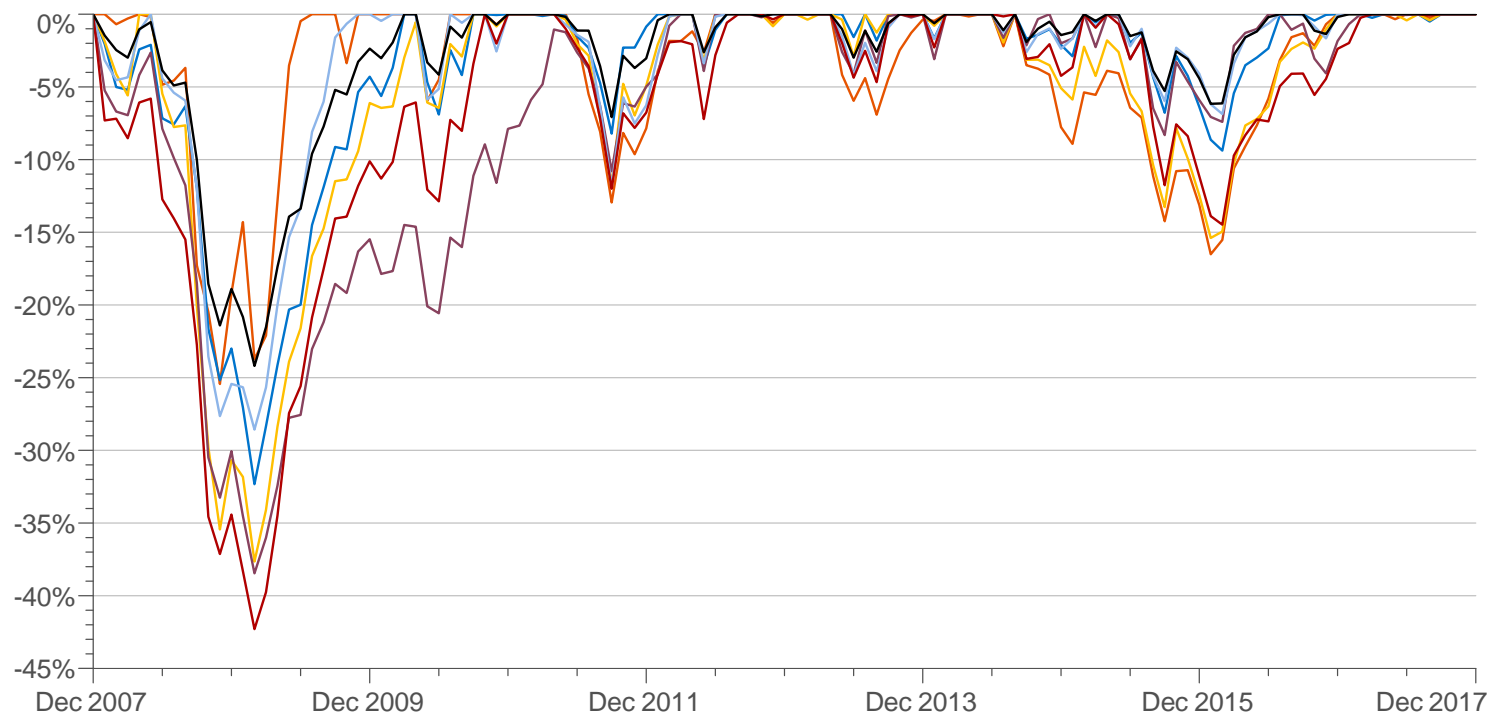
	Return (%)	Std Dev (%)	Downside Risk (%)	Beta vs. Market	Alpha vs. Market (%)	R-Squared vs. Market (%)	R-Squared vs. Style (%)	Sharpe Ratio	Tracking Error vs. Market (%)	Observs.
Yorktown Multi-Asset Income Institutional	8.10	12.06	8.95	1.3939	2.40	67.69	68.30	0.6432	7.4077	120
Goldman Sachs Income Builder Instl	6.14	9.55	7.28	1.2941	0.70	93.06	95.16	0.6065	3.2722	120
Franklin Income Adv	5.71	11.96	9.19	1.5920	-0.76	89.78	85.86	0.4485	5.6905	120
American Funds Capital Income Bldr R6	4.62	11.17	8.64	1.4924	-1.44	90.44	83.04	0.3827	4.9215	120
JPMorgan Income Builder I	6.49	9.83	7.61	1.3378	0.88	93.82	84.36	0.6255	3.4297	120
Thornburg Investment Income Builder I	5.42	12.38	9.49	1.6559	-1.26	90.63	83.84	0.4101	6.0149	120
Morningstar Allocation--30% to 50% Equity	4.25	7.12	5.51	1.0000	0.00	100.00	91.15	0.5490	0.0000	120

Correlation Matrix: Returns vs. Morningstar Allocation--30% to 50% Equity
January 2008 - December 2017

	(1)	(2)	(3)	(4)	(5)	(6)	(7)
1) Yorktown Multi-Asset Income Institutional	1.00						
2) Goldman Sachs Income Builder Instl	0.78	1.00					
3) Franklin Income Adv	0.87	0.93	1.00				
4) American Funds Capital Income Bldr R6	0.74	0.93	0.89	1.00			
5) JPMorgan Income Builder I	0.81	0.92	0.93	0.93	1.00		
6) Thornburg Investment Income Builder I	0.79	0.93	0.91	0.96	0.94	1.00	
7) Morningstar Allocation--30% to 50% Equity	0.82	0.96	0.95	0.95	0.97	0.95	1.00

Drawdown

January 2008 - December 2017



- Yorktown Multi-Asset Income Institutional
- Goldman Sachs Income Builder Instl
- Franklin Income Adv
- American Funds Capital Income Bldr R6
- JPMorgan Income Builder I
- Thornburg Investment Income Builder I
- Morningstar Allocation--30% to 50% Equity

Drawdown Table

January 2008 - December 2017: Summary Statistics

	Max Drawdown	Max Drawdown Begin Date	Max Drawdown End Date	Max Drawdown Length	Max Drawdown Recovery Date	Pain Index	Pain Ratio	Omega (MAR = 0.00%)	Gain to Loss Ratio	High Water Mark Date	To High Water Mark
Yorktown Multi-Asset Income Institutional	-25.44%	May 2008	Nov 2008	7	Jul 2009	4.02%	1.93	1.79	0.93	Dec 2017	0.00%
Goldman Sachs Income Builder Instl	-32.33%	Jan 2008	Feb 2009	14	Mar 2010	3.82%	1.51	1.68	0.97	Dec 2017	0.00%
Franklin Income Adv	-37.65%	Jun 2008	Feb 2009	9	Sep 2010	5.47%	0.98	1.52	0.91	Dec 2017	0.00%
American Funds Capital Income Bldr R6	-38.46%	Jan 2008	Feb 2009	14	Mar 2012	6.78%	0.63	1.43	0.92	Dec 2017	0.00%
JPMorgan Income Builder I	-28.57%	Jun 2008	Feb 2009	9	Nov 2009	3.30%	1.86	1.72	0.86	Dec 2017	0.00%
Thornburg Investment Income Builder I	-42.30%	Jan 2008	Feb 2009	14	Oct 2010	6.87%	0.74	1.47	0.85	Dec 2017	0.00%
Morningstar Allocation--30% to 50% Equity	-24.19%	Jan 2008	Feb 2009	14	Mar 2010	2.81%	1.39	1.63	0.85	Dec 2017	0.00%

Yorktown Multi-Asset Income Fund
Average Annual Total Returns (%) as of 12/31/2017

Class	Symbol	1 Year	3 Year	5 Year	10 Year	Inception
A ^{1,4}	APIUX	10.04	6.20	4.74	7.64	5.81
A ^{2,4}	APIUX	3.70	4.12	3.50	7.00	5.81
L ⁵	AFFIX	9.47	5.64	4.20	7.06	5.34
Institutional ³	APIIX	10.58	6.73	5.26	-	6.37

¹w/o Sales Charge ²with Sales Charge ³Inception Date 4/1/2010 ⁴Inception Date 7/2/1997 ⁵Inception Date 7/1/2004

The performance data quoted represents past performance and does not guarantee future results. The investment return and principal value of an investment in the Fund will fluctuate so that an investor's shares, when redeemed, may be worth more or less than their original cost. Current performance of the Fund may be lower or higher than the performance quoted. Performance data current to the most recent month end may be obtained by calling 1-800-544-6060.

The maximum front end load for all funds as disclosed in the prospectus is 5.75%. As of May 31, 2017, amended December 22, 2017, the operating expense ratios for the Yorktown Multi-Asset Income Fund are as follows: Class A, 1.17%; Class L, 1.67%; Institutional Class, 0.67%. The Fund does not use fee waivers at this time.

Gross Expense Ratios for Funds in this zephyr: GSBIX, 0.71%; FRIAX, 0.46%; RIRGX, 0.29%; JNBSX, 0.81%; TIBIX, 1.07%.

Performance shown prior to APIIX inception on 4/1/10 uses extended performance for the longest standing share class (A share) and is net of fees.

You should carefully consider the investment objectives, potential risks, management fees, and charges and expenses of the Fund before investing. The Fund's prospectus contains this and other information about the Fund, and should be read carefully before investing. You may obtain a current copy of the Fund's prospectus by calling 1-800-544-6060.

Distributed by Unified Financial Securities, LLC (Member FINRA)